






# Mekano® Support System

AVAILABLE MATERIALS



**Digital Libraries.**  
All standard components and popular assemblies are detailed in libraries available for PDMS and SP3D. Our R&D department have a global team of designers and engineers always available to discuss and assist with any special application.

## Rectangular slotting - for EI&T, HVAC and Tubing

				
<p><b>Mekano® 50-1</b> 1-sided channel Available in: 1.5 mm material thickness.</p>	<p><b>Mekano® 50-2</b> 2-sided support channel Available in: 1.5 mm material thickness.</p>	<p><b>Mekano® 100-1</b> 1-sided channel Available in: 1.5 mm material thickness.</p>	<p><b>Mekano® 50-2T</b> Triangle support channel Available in: 1.5 &amp; 2 mm material thickness.</p>	<p><b>Mekano® 100-2T</b> Triangle support channel Available in: 2 mm material thickness.</p>

## Square slotting - for Multiple Diciplines including Pipe Support

				
<p><b>Mekano® 50-2T</b> Triangle support channel Available in: 2.5 mm material thickness.</p>	<p><b>Mekano® 100-2T3</b> Triangle support channel Available in: 3 mm material thickness.</p>	<p><b>Mekano® 100-3*</b> 3-sided support channel Available in: 2.5 mm material thickness.</p>	<p><b>Mekano® 100-4</b> Square Hollow Section Available in: 3 &amp; 5 mm material thickness.</p>	<p><b>Mekano® 125-2T5</b> Triangle support channel Available in: 5 mm material thickness.</p>

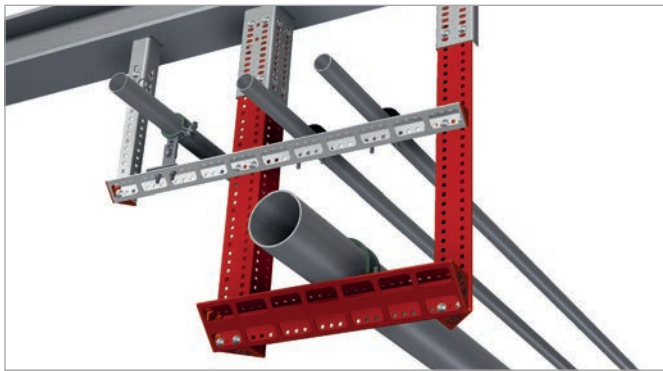
Mekano® is a flexible, light weight and cost saving support system for all main disciplines including electrical, instrumentation, telecom, HVAC and piping. Mekano® sections are available in a range of profiles, grades and materials to suit any application, however all share the same high quality engineering solutions.

**Lighter, Safer & Cost Effective.**

Mekano® support systems are bolted together on site, or in lightweight pre-assembled sections for safe and easy installation. When compared to traditional welded supports, Mekano® Systems are significantly lighter, quicker to install, safer in construction and more cost effective.

**Maximum Flexibility.**

Most importantly, Mekano® systems offer full flexibility in design and installation both in initial construction and in all subsequent adaptation or upgrade works. This flexibility is yet further enhanced by employing our MultiGrid® installation methods as best practice. For full details, see next section.



**Our flagship range.**

The patented Mekano® Triangular sections are compact and rigid due to their closed section, whilst being considerably lighter than SHS or RHS sections. Unlike welded stock steel and UNO type systems, Mekano® Triangular sections can be fitted back to back without the need for additional brackets or fittings. The profiles have generous access holes on the back in order to easily access fasteners, and also allow for cables to be housed.

A full and comprehensive range of standard and specialist accessories are available which simplify design and procurement, and offer quick, safe and economical installation for all disciplines.



**Back to back**

All channels are connected back to back using self locking bolts as shown in the picture.

# Contents

## Mekano® Support System

### Mekano Channels

- 19 Mekano Channels for EI&T and HVAC
- 20 Mekano Channels for all Disciplines including Pipe Support

### Mekano Accessories

- 20 Mekano Accessories for CH50 Channels
- 21 Mekano Accessories for CH100-1/CH100-2T Channels
- 22 Mekano Accessories for CH100-4 Channels
- 23 Mekano Accessories for CH125 Channels

### Mekano Starter Brackets

- 25 Welded Starter Brackets
- 26 Welded Starter Brackets for Stringer
- 28 Welded Starter Brackets for Cantilever
- 28 Bolted Starter Brackets
- 30 Beam Clamps



*Intellectual Property Rights*

Please note that several of the products presented in this catalogue are protected by our intellectual property rights in the form of patents, registered designs and trademarks, and that we have made the strategic decision to police and enforce these rights in all relevant jurisdictions.



Support-Multidiscipline Length

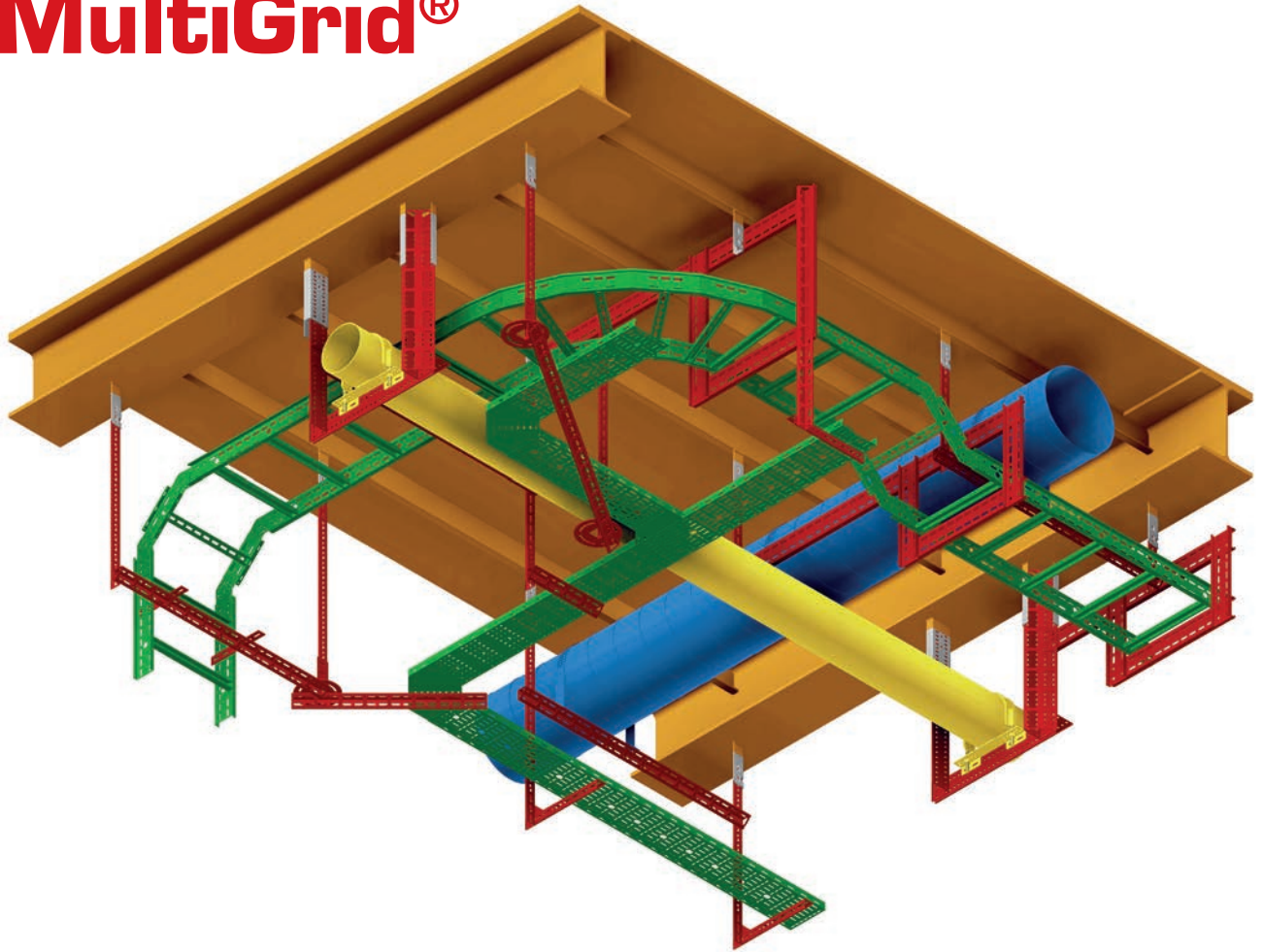
S-M WB 200 CH100-2T

Welded Starter Bracket Fits channel

CH = Channel  
WB = Welded Starter Bracket  
BC = Beam Clamp  
BS = Bolted Starter Bracket



# Our Recommended Installation Method: MultiGrid®



In order to provide ultimate flexibility during installation and future extension or adaptation, we highly recommend designing and installing according to our MultiGrid® concept for support.

Experience gained from close to half a century of detailed work in projects of all sizes and levels of complexity, proves that most installations have some change to their design or unforeseen adaptation requirements during the construction or installation phase.



MultiGrid® is our concept of installing a grid of welded starter brackets in a set pattern over the entire equipment area as opposed to having to pre-determine, locate and provide support directly over each specific component requiring support.

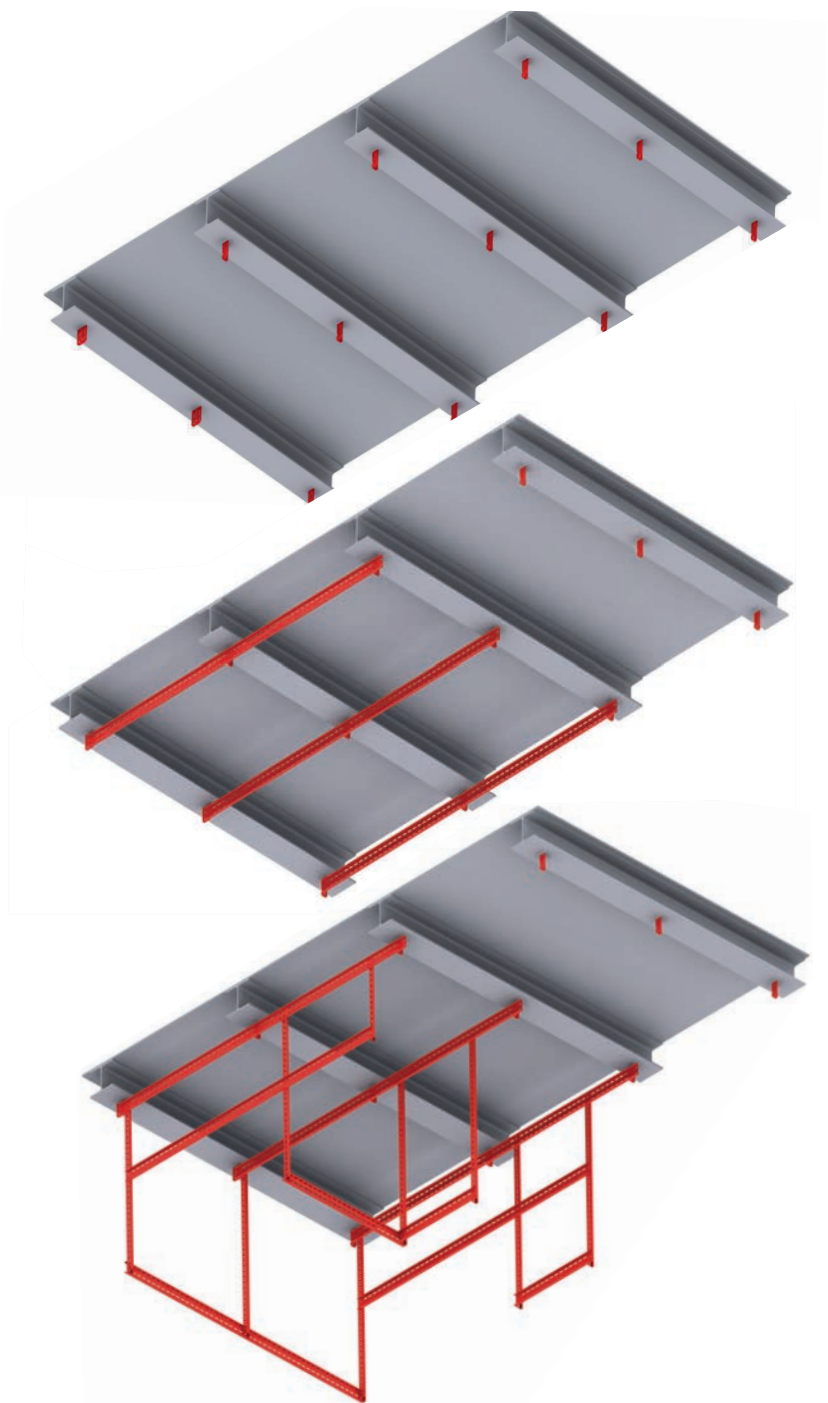
Exceptional load brackets can of course also be added at this time to cover any specific load requirements for example to support piping sections.

Starter brackets can be connected using Mekano® traverse beams to maximise the flexibility, or support can be taken directly from the starter brackets. MultiGrid® allows for supports to be shared between multiple disciplines, thus optimising the installation space available and greatly reducing the time and material required to support each discipline independently or separately.

The inbuilt redundancy provided by multiple starter points at the early stage of construction is a low cost, no risk investment compared to the significant costs and difficulties in having to add or reposition supports during later stages of construction, or in the worst case, during operation.

The flexibility MultiGrid® offers also allows for future upgrades in technology and new equipment to be incorporated in existing spaces without requiring entire refits. Using MultiGrid® and bolted Mekano® support, entire areas can be reconfigured without requiring hot-work.

Mekano® starter brackets for designing MultiGrid® installations are available in various lengths and types in a range of material qualities to suit any installation environment.

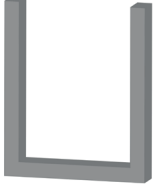

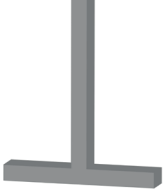

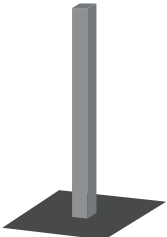


Employing the MultiGrid® installation principle is especially beneficial when the structure has been insulated to allow for any future modification during construction or when the installation has been put into service.

# CHANNEL SELECTOR:

- Recommended
- Can be used
- Not recommended

V=vertical  
H=horizontal

	U-Frame	L-Frame	T-Frame	Cantilever	Stand/Goal Post
					

<b>Mekano® 50-1</b> 	V	<span style="color: green;">●</span> Max 1 m	<span style="color: red;">●</span>	<span style="color: red;">●</span>	<span style="color: red;">●</span>	<span style="color: red;">●</span>
	H	<span style="color: green;">●</span> Max 1 m	<span style="color: red;">●</span>	<span style="color: red;">●</span>	<span style="color: red;">●</span>	<span style="color: red;">●</span>
<b>Mekano® 50-2</b> 	V	<span style="color: yellow;">●</span> Max 3 m	<span style="color: red;">●</span>	<span style="color: red;">●</span>	<span style="color: red;">●</span>	<span style="color: red;">●</span>
	H	<span style="color: yellow;">●</span> Max 0.5 m	<span style="color: red;">●</span>	<span style="color: red;">●</span>	<span style="color: red;">●</span>	<span style="color: red;">●</span>
<b>Mekano® 100-1</b> 	V	<span style="color: yellow;">●</span> Max 3 m	<span style="color: red;">●</span>	<span style="color: red;">●</span>	<span style="color: red;">●</span>	<span style="color: red;">●</span>
	H	<span style="color: green;">●</span> Max 1 m	<span style="color: red;">●</span>	<span style="color: red;">●</span>	<span style="color: red;">●</span>	<span style="color: red;">●</span>
<b>Mekano® 50-2T1.5</b> 	V	<span style="color: green;">●</span> Max 3 m	<span style="color: green;">●</span> Max 1 m**	<span style="color: green;">●</span> Max 1 m	<span style="color: yellow;">●</span> Max 0.5 m	<span style="color: red;">●</span>
	H	<span style="color: yellow;">●</span> Max 0.75 m	<span style="color: red;">●</span>	<span style="color: red;">●</span>		
<b>Mekano® 100-2T2</b> 	V	<span style="color: green;">●</span> Max 5.9 m*	<span style="color: green;">●</span> Max 1.5 m**	<span style="color: green;">●</span> Max 1.5 m	<span style="color: green;">●</span> Max 0.6 m	<span style="color: green;">●</span> Max 3 m
	H	<span style="color: green;">●</span> Max 2 m	<span style="color: green;">●</span> Max 0.6 m**	<span style="color: green;">●</span> Max 2x0.6 m		
<b>Mekano® 50-2T2.5</b> 	V	<span style="color: green;">●</span> Max 3 m	<span style="color: green;">●</span> Max 1 m**	<span style="color: green;">●</span> Max 1 m	<span style="color: yellow;">●</span> Max 0.5 m	<span style="color: red;">●</span>
	H	<span style="color: yellow;">●</span> Max 0.75 m	<span style="color: yellow;">●</span> Max 0.4 m**	<span style="color: yellow;">●</span> Max 2x0.4 m		
<b>Mekano® 100-2T3</b> 	V	<span style="color: green;">●</span> Max 5.9 m*	<span style="color: green;">●</span> Max 1.5 m	<span style="color: green;">●</span> Max 1.5 m	<span style="color: green;">●</span> Max 1 m	<span style="color: green;">●</span> Max 3 m
	H	<span style="color: green;">●</span> Max 3 m	<span style="color: green;">●</span> Max 0.6 m	<span style="color: green;">●</span> Max 2x0.6 m		
<b>Mekano® 100-3</b> 	V	<span style="color: green;">●</span> Max 2.5 m	<span style="color: green;">●</span> Max 1 m	<span style="color: green;">●</span> Max 1 m	<span style="color: green;">●</span> Max 0.5 m	<span style="color: green;">●</span> Max 2 m
	H	<span style="color: green;">●</span> Max 2 m	<span style="color: green;">●</span> Max 0.5 m	<span style="color: green;">●</span> Max 2x0.5 m		
<b>Mekano® 100-4</b> 	V	<span style="color: green;">●</span> Max 5.9 m*	<span style="color: green;">●</span> Max 2 m	<span style="color: green;">●</span> Max 3 m	<span style="color: green;">●</span> Max 1 m	<span style="color: green;">●</span> Max 4 m
	H	<span style="color: green;">●</span> Max 3 m	<span style="color: green;">●</span> Max 0.6 m	<span style="color: green;">●</span> Max 2x0.6 m		
<b>Mekano® 125-2T5</b> 	V	<span style="color: green;">●</span> Max 5.9 m*	<span style="color: green;">●</span> Max 2 m	<span style="color: green;">●</span> Max 3 m	<span style="color: green;">●</span> Max 1 m	<span style="color: green;">●</span> Max 4 m
	H	<span style="color: green;">●</span> Max 3 m	<span style="color: green;">●</span> Max 0.6 m	<span style="color: green;">●</span> Max 2x0.6 m		

\*Additional bracing must be considered

\*\*Requires Gusset Plate



# Mekano Channels for EI&T and HVAC

## Mekano Channel 50-1

C-shaped Mekano Channel for light EI&T and HVAC support.

Type Description	SS	SS (kg)	HDG
S-M CH50-1-3000	1371687	3.8	1371684



## Mekano Channel 50-2

Angled Mekano Channel for EI&T and HVAC support.

Type Description	SS	SS (kg)	HDG
S-M CH50-2-3000	1371689	5.1	1302506



## Mekano Channel 50-2T1.5

Mekano Triangle Channel for EI&T and HVAC support.

Type Description	SS	SS (kg)	HDG
S-M CH50-2T1.5-3000	1372181	4.2	1372186
S-M CH50-2T1.5-5900	1372191	8.3	1372196



## Mekano Channel 50-2T2

Mekano Triangle Channel for EI&T and HVAC support.

Type Description	SS	SS (kg)	HDG
S-M CH50-2T2-3000	1372182	5.5	1372187
S-M CH50-2T2-5900	1372192	10.8	1372197



## Mekano Channel 100-1

C-shaped Mekano Channel for EI&T and HVAC support.

Type Description	SS	SS (kg)	HDG
S-M CH100-1-3000	1371685	5.1	1371649



## Mekano Channel 100-2T2

Mekano Triangle Channel for EI&T and HVAC support.

Type Description	SS	SS (kg)	HDG
S-M CH100-2T2-3000	1372184	11.5	1372189
S-M CH100-2T2-5900	1372194	22.6	1372199



# Mekano Channels for all Disciplines including Pipe Support

## Mekano Channel 50-2T2.5

Mekano Triangle Channel for heavy load and piping applications.

Type Description	SS	SS (kg)	HDG
S-M CH50-2T2.5-3000	1372183	7.3	1372188
S-M CH50-2T2.5-5900	1372193	14.2	1372198



## Mekano Channel 100-2T3

Mekano Triangle Channel for heavy load and piping applications.

Type Description	SS	SS (kg)	HDG
S-M CH100-2T3-3000	1372185	18.0	1372190
S-M CH100-2T3-5900	1372195	35.4	1372200



## Mekano Channel 100-4

Mekano SHS Channel for extra heavy load and piping applications. Material thickness 3 or 5 mm.

Type Description	SS	SS (kg)	HDG
S-M CH100-4-3-6000	1372526	49.5	1372525
S-M CH100-4-5-6000	1372531	81.8	1372530



## Mekano Channel 125-2T5

Mekano Triangle Channel for heavy load and piping applications.

Type Description	SS	SS (kg)
S-M CH125-2T5-3000	1303398	36.9



# Mekano Accessories for CH50 Channels

## Mekano 50-1 Splice Connector

Splice Connector for Mekano 50-1 Channels.

Type Description	Fasteners included	SS	SS (kg)	HDG
S-M SC-CH50-1	2xM10	1302595	0.3	1372763



## Mekano 50-2 Splice Connector

Splice Connector for Mekano 50-2 and 50-2T Channels

Type Description	Fasteners included	SS	SS (kg)	HDG
S-M SC-CH50-3	4xM10	1372624	0.4	84824



## Mekano 50-2 Flush Connector Bracket

Bracket allowing Mekano 50-2 Channels to be flush fitted where back to back fitting is restricted. In left and right hand variants.

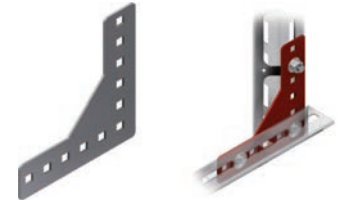
Type Description	Fasteners included	SS	SS (kg)	
S-M-AB CH-50-2T SS	-	80381	0.3	
S-M-AB CH-50-2T SS	-	80382	0.3	



## Mekano 50-2T Gusset Plate

Gusset Plate to reinforce the connection between two Mekano Triangle Channels.

Type Description	SS	SS (kg)	HDG
S-M GP-CH-50-2T	85678	0.2	85497



## Mekano 50-2T Edge Protector

Used to protect cables routed through the slots in Triangular Channels.

Type Description	Silicone	Silicone (kg)
A-CH-2T2 EP-O	88912	0.007



## Mekano 50-2T End Cap

High visibility end protection for channel.

Type Description	Plastic	Plastic (kg)
A-CH50-2T EP	82197	0.01

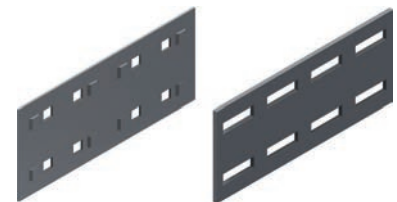


# Mekano Accessories for CH100-1/CH100-2T Channels

## Mekano 100-1 Splice Connector

Splice Connector available with or without notches. Notches (code NO) are recommended where possible to strengthen the connection.

Type Description	Fasteners included	SS	SS (kg)	HDG
OE/LOE-100-SC-NO	4xM10	1371681	0.3	
OE100-SC	4xM10	1371683	0.5	1371678



## Mekano 100-2T Splice Connector

Splice Connector for Channel 100-2T and 100-4.

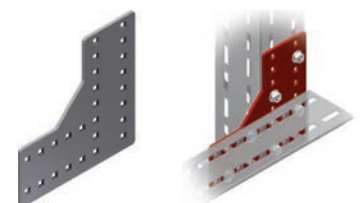
Type Description	SS	SS (kg)	HDG
S-M SC-CH100-5	1372534	1.2	1372535



## Mekano 100-2T Gusset Plate

Gusset Plate to reinforce the connection between two Mekano Triangle Channels.

Type Description	SS	SS (kg)	HDG
S-M GP-CH-100-2T	59506	1.1	59507





## Mekano 100-2T End Cap

High visibility end protection for channels.

Type Description	Plastic	Plastic (kg)
A-CH100-2T EP	82198	0.03



## Mekano 100-2T Edge Protector

Used to protect cables routed through the slots in Triangular Channels.

Type Description	Silicone	Silicone (kg)
A-CH-2T2 EP-O	88912	0.007



# Mekano Accessories for CH100-4 Channels

## Mekano 100-4 Splice Connector

Splice Connector for Channel 100-2T and 100-4.

Type Description	SS	SS (kg)	HDG
S-M SC-CH100-5	1372534	1.2	1372535



## Mekano 100-4 L-Splice

L-shaped Splice Connector for Mekano 100-4 Channels.

Type Description	SS	SS (kg)	HDG
S-M SC-L-CH100-4	1372540	2.6	1372539



## Mekano 100-4 T-Splice

T-shaped Splice Connector for Mekano 100-4 Channels.

Type Description	SS	SS (kg)	HDG
S-M SC-T-CH100-4	1372543	2.4	1372542



## Mekano 100-4 X-Splice

Cross-shaped Splice Connector for Mekano 100-4 Channels.

Type Description	SS	SS (kg)
S-M SC-CP-CH100-4	82356	2.0



## Mekano 100-4 Bracing Connector, type A

Bracing Connector for Mekano Channel 100-4.

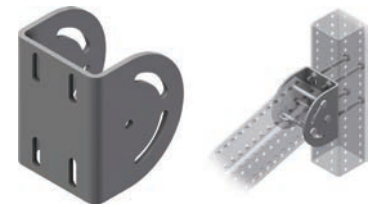
Type Description	Fasteners included	SS	SS (kg)
S-M SC-V-CH100-4-A	7xM10	1301571	2.4



## Mekano 100-4 Bracing Connector, type B

Bracing Connector for Mekano Channel 100-4.

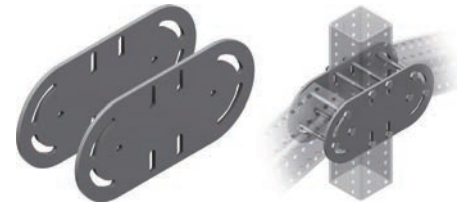
Type Description	Fasteners included	SS	SS (kg)
S-M SC-V-CH100-4-B	7xM10	1301569	2.0



## Mekano 100-4 Bracing Connector, type C

Bracing Connector for Mekano Channel 100-4.

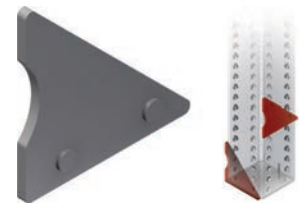
Type Description	Fasteners included	SS	SS (kg)
S-M SC-V-CH100-4-C	10xM10	1301570	3.8



## Mekano 100-4 Cut Marking Tool

Marking tool to aid cutting Mekano 100-4 to 45° or 90°.

Type Description	SS	SS (kg)
S-M CD-CH100-4	1372533	0.2



# Mekano Accessories for CH125 Channels

## Mekano 125-2T Splice Connector

Splice Connector for Channel 125-2T5.

Type Description	SS	SS (kg)
S-M SC-CH125-2T5-250	1302063	2.8



## Mekano 125-2T L Gusset Plate

Gusset Plate to reinforce the connection between two Mekano Triangle Channels.

Type Description	SS	SS (kg)
S-M GP-CH-125-2T5	1306898	1.3



## Mekano 125-2T X Gusset Plate

Gusset Plate to reinforce the connection between two Mekano Triangle Channels.

Type Description	SS	SS (kg)
S-M GP-N-CH-125-2T5	1302173	2.4



## Mekano 125-2T X Interface Gusset Plate

Gusset Plate to reinforce the connection between two Mekano Triangle Channels CH125-2T and CH100-2T.

Type Description	SS	SS (kg)
S-M GP-N-CH-125/CH-100-2T5	1302083	2.4



## Mekano 125-2T T Gusset Plate

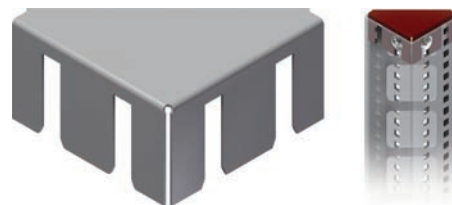
T Gusset Plate to reinforce the connection between two Mekano Triangle Channels.



Type Description	SS	SS (kg)
S-M GP-T-CH-125-2T5	1301576	2.0

## Mekano 125-2T End Cap

End protection for channel.



Type Description	SS	SS (kg)
A-CH125-2T5 EP	90609A	0.2



# Welded Starter Brackets

## Welded Flat Bracket 50

Welded Starter Bracket for EI&T and HVAC. Suitable for 50-1 Channel. Available in two lengths. Note: 125 mm length is not suitable for NORSOK painting regulations.



Type Description	SS	SS (kg)	CS
S-M WB-125-CH50-1	1371695	0.2	1302511
S-M WB-200-CH50-1	1371696	0.3	1302512

## Welded L-Bracket 50

Welded Starter Bracket for Mekano 50-2 and 50-2T Channels. Also for piping installations when combined with Triangle Channel with square holes. Note: 125 mm length is not suitable for NORSOK painting regulations.



Type Description	SS	SS (kg)	CS
S-M WB-125-CH50-2	82211	0.5	82210
S-M WB-200-CH50-2	1371698	1.0	1302514
S-M WB-300-CH50-2	1371699	1.5	1302599

## Welded L-Bracket 50/100

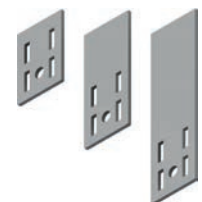
Welded Starter Bracket for multiple applications. Suitable for Mekano 50-2T and 100-2T Channels. Also for piping installations when combined with Triangle Channel with square holes. Available in three lengths.



Type Description	SS	SS (kg)
S-M WB-140-CH50-T/CH100-T	1301566	0.9
S-M WB-200-CH50-T/CH100-T	1301567	1.4
S-M WB-300-CH50-T/CH100-T	1301568	2.1

## Welded Flat Bracket 100

Welded Starter Bracket for EI&T and HVAC. Suitable for 50-1 channel. Available in three lengths. Note: 125 mm length is not suitable for NORSOK painting regulations.



Type Description	SS	SS (kg)	CS
S-M WB-125-CH100-1	1371691	0.5	1302507
S-M WB-200-CH100-1	1371692	0.8	1302508
S-M WB-300-CH100-1	1371693	1.2	1302509

## Welded C-Bracket 100-2T

Welded Starter Bracket for Mekano 100-2T Channels. Suitable for EI&T and HVAC. Available in two lengths. With hole for safety line.



Type Description	SS	SS (kg)
SM WB-200-CH100-2T	1301024	1.6
S-M WB-300-CH100-2	1301061	2.5

## Welded C-Bracket 100-2T3

Welded Starter Bracket for Mekano 100-2T3 Channels with square holes. Can also be used for CH100-2T2.



Type Description	SS	SS (kg)
S-M WB-300-CH100-2T3	1302061	2.3

## Welded U-Bracket 100-4

Welded Starter for extra heavy load and piping applications.

Type Description	SS	SS (kg)	CS
S-M WB-240-CH100-4	1372601	3.0	1372606



## Welded U-Bracket 100-4 Plate

Welded Starter for extra heavy load and piping applications. With 8 mm top plate, 106x113 mm.

Type Description	SS	SS (kg)
S-M WB-PL-CH100-4	1372552	5.5



## Welded U-Bracket 100-4 Fire Protection

Welded Starter Bracket for heavy load and piping applications. Suitable for fire protection. With 8 mm plate, 200x200 mm.

Type Description	SS	SS (kg)
S-M WB-FP-CH100-4	1372602	12.3



## Welded C-Bracket 125-2T5

Welded Starter Bracket for Mekano 125-2T5 Channels with square holes.

Type Description	SS	SS (kg)
S-M WB-300-CH125-2T5	1306897	3.3



## Doubling Plates

Doubling plates for welding to structure for attaching welded starter brackets.

Type Description	SS	SS (kg)
S-M PL-100x100x20	74345	1.6
S-M PL-150x150x20	74346	3.6
S-M PL-200x200x20	74347	6.4



## Welded Starter Brackets for Stringer

### Welded L-Bracket 50 Stringer

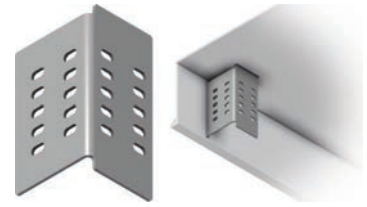
Angled Welded Starter Bracket for welding to stringer. Can be combined with Mekano 50-2, and 50-2T Channels. Also for piping installations when combined with Triangle Channel with square holes.

Type Description	SS	SS (kg)	CS
S-M WB-ST-200-CH50-2	84283	0.9	84287



## Welded L-Bracket 100-2T Stringer

Welded Starter Bracket for welding to stringer. For Mekano CH100-2T channels. Can be combined with Mekano 50-2 and 50-2T Channels. Also used for piping installations when combined with Triangle Channel with square holes.



Type Description	SS	SS (kg)
S-M WB-ST-220-CH100-2T	1301073	1.2



## Welded Starter Brackets for Cantilever

### Welded L-Bracket 100-2T Cantilever

Welded Starter Bracket for Mekano 100-2T Channels. Fits inside channel. Also for piping installations when combined with Triangle Channel with square holes.



Type Description	SS	SS (kg)
S-M WB-IN-225-CH100-2T	1301059	1.4

## Bolted Starter Brackets

### Bolted L-Bracket 50 Twin Fix

Bolted Starter for Mekano 50-2T with two fixing holes.



Type Description	SS	SS (kg)	HDG
SM BS-125-CH50-2T	1303396	0.5	1303397

### Bolted Inline Starter 50

Starter Bracket for Mekano CH50-2T for use with Concrete Insert Rail, UNO Cantilevers or fixing directly to structure.



Type Description	SS	SS (kg)	HDG
S-M BS-CH50-2	80133	0.5	80134

### Bolted Z-Bracket 100

Bolted Starter for Mekano 100-1 and 100-2T.



Type Description	SS	SS (kg)	HDG
S-M BS-CH100-1	1371707	1.2	61092

### Bolted L-Bracket 50

Bolted Starter for Mekano 50-2T with three fixing holes.



Type Description	SS	SS (kg)	HDG
S-M BS-125-CH50-2T-3	1306907	0.7	1306904

### Bolted L-Bracket 100-2T

Bolted Starter for Mekano 100-2T with three fixing holes. Available in 3 or 5 mm material thickness.



Type Description	SS	SS (kg)	HDG
S-M BS-125-CH100-2T-3	1306908	1.3	1306905
S-M BS-125-CH100-2T-5	1306909	1.8	1306906

### Bolted C-Bracket 100-2T

Bolted Starter Bracket for Mekano 100-2T Channels. Suitable for EI&T and HVAC. Available in two lengths. With hole for safety line.



Type Description	SS	SS (kg)	HDG
S-M BS-200-CH100-2T	1371425	4.3	1371426
S-M BS-300-CH100-2T	1371427	5.1	1371428

## Bolted C-Bracket 100-2T3

Bolted Starter Bracket for Mekano 100-2T3 Channels. Suitable for heavy load and piping applications. Can also be used with 100-2T for EI&T and HVAC applications.



Type Description	SS	SS (kg)	HDG
SM BS-300-CH100-2T3	1303358	5.0	1303359

## Bolted U-Brackets 100-4

Bolted Starter Bracket for Mekano 100-4 Channels. Suitable for heavy load and piping applications. With 8 mm plate in three different dimensions: A. 200x200 mm, B. 150x200 mm, C. 120x200 mm.



Type Description	SS	SS (kg)	HDG	HDG (kg)
S-M BS-CH100-4-A	1372550	5.5	1372603	5.9
S-M BS-CH100-4-B	1372555	4.9	1372554	5.2
S-M BS-CH100-4-C	1372523	4.5	1372522	4.8

## Bolted C-Bracket 125-2T5

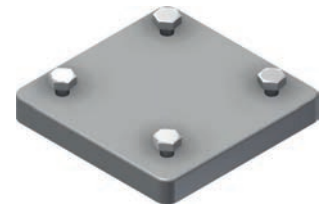
Bolted Starter Bracket for Mekano 125-2T5 Channels. Suitable for heavy load and piping applications.



Type Description	SS	SS (kg)
S-M BS-300-CH125-2T5	1306896	8.4

## Doubling Plates Threaded

Doubling plates for welding to structure for attaching bolted starter brackets. 16 mm bolts are supplied for protecting the plates threaded holes during construction.



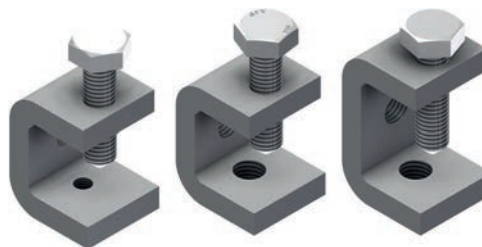
Type Description	Fasteners included	SS	SS (kg)
PL-150x150x20 CC-100-M10	-	79981	3.6
PL-200x200x20 CC-150-M10	-	79558	6.5
PL-250x250x20 CC-200-M10	-	79559	10.1
PL-300x300x20 CC-250-M12	-	79560	14.5

# Beam Clamps

## Simple Beam Clamp

Beam Clamp with tapered bolt for direct fixing to beam flanges. For up to 25 and 35 mm thick flanges.

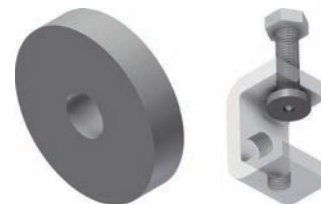
Type Description	SS	SS (kg)
S-M BC-U-25/6	1371801	0.2
S-M BC-U-25/10	1371802	0.2
S-M BC-U-35/10	1371803	0.2



## Pressure Distribution Plate

Pressure Distribution Plate for use with tapered bolts. Prevents damage to paintwork.

Type Description	SS	SS (kg)
S-M BC-U-PP	1371804	0.006



## H-Beam Clamp 50

Pair of Beam Clamps for use with traverse beams. BC-160 is for flange width 88 - 160 mm and BC-300 is for flange width 102 - 300 mm. Suitable for flange thickness up to 14 mm. Beam clamps can also be used with Mekano 50-1, 50-2, 50-2T and 100-1 channels.

Type Description	SS	SS (kg)	HDG	HDG (kg)
S-M BC-FC	85197	0.4	85196	0.4
S-M BC-160	85622	1.2	85621	1.2
S-M BC-300	85624	1.7	85623	1.8

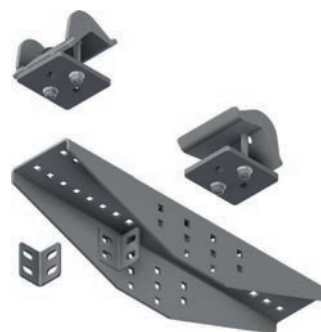
2 Locking Bolt set(s) M10x50 included



## H-Beam Clamp 100

Pair of Beam Clamps for use with a traverse beam. The traverse beam is suitable for flange width 100 to 350 mm and up to 30 mm thick. Beam Clamps can be used with Mekano 100-2T & 100-3 channels. Angle Brackets can be used to reinforce connections.

Type Description	Fasteners included	SS	SS (kg)	HDG
S-M BC-CH100-3	4xM10	1372491	3.0	1372490
S-M BT-CH100-3	-	1372495	3.5	1372494
S-M MG-CA	-	1372497	0.08	80926



## H-Beam Clamp 100-4

Heavy duty Beam Clamp for Mekano Channel 100-4. Fits all sizes from HE240A/B to HE1000A/B and similar beams with 240 to 300 mm flange width.

Type Description	SS	SS (kg)	HDG
S-M BC-MS-CH100-4-A	1372520	15.8	1372519

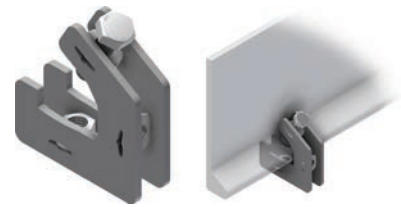




## Stringer Clamp

Bolted Clamp Bracket for stringer. For light loads.

Type Description	SS	SS (kg)	HDG
S-M BC-ST-HD SS	86877	0.3	86889



## Stringer Clamp 100

Bolted Clamp Bracket for stringer. For medium loads. Use minimum two in combination for stability.

Type Description	SS	SS (kg)
S-M BC-ST-HD	86887	2.4

